

## MEME partner universities

Four European universities (University of Groningen, Netherlands; Uppsala University, Sweden; Ludwig Maximilians University of Munich, Germany; University of Montpellier, France) have joined forces with Harvard University (USA) as an associated partner. MEME offers students the opportunity to compose an individual study programme in evolutionary biology by combining elements from the complementary programmes that are already established at the participating universities. Students spend at least a semester at several partner universities, and they will be awarded double degrees for this. For more information please see our web page [www.evobio.eu](http://www.evobio.eu). Here you can find the contact details of the coordinators of the MEME programme participating universities:



**University of Groningen:**  
Prof. Dr. Franjo Weissing  
f.j.weissing@rug.nl



**Ludwig Maximilians-University Munich:**  
Prof. Dr. John Parsch  
parsch@zi.biologie.uni-muenchen.de



**University of Montpellier:**  
Dr. Yannis Michalakis  
yannis.michalakis@ird.fr



UPPSALA  
UNIVERSITET

**Uppsala University:**  
Prof. Dr. Jacob Höglund  
jacob.hoglund@ebc.uu.se



**Harvard University:**  
Associated partner



## Erasmus Mundus Master Programme in Evolutionary Biology



Study at **two or more** partner universities

Receive a **double degree**

Full **scholarships** available

To start the programme in September 2017,  
the **Application deadline** is:

**1 February 2017 12PM CET**

You can start with your application from *1 October 2016*  
onwards. Note that only after 1 October you can  
download the application form and send in your  
application package.

Contact address for further information:

Ms. Dr. Maartje Giesbers  
Administrative coordinator MEME Programme:  
GELIFES  
Centre for Life Sciences  
P.O. BOX 11103  
9700 CC Groningen  
The Netherlands  
Tel: 31 (0)50 363 8482 / Email: [m.c.w.g.giesbers@rug.nl](mailto:m.c.w.g.giesbers@rug.nl)

For more information please visit: [www.evobio.eu](http://www.evobio.eu)



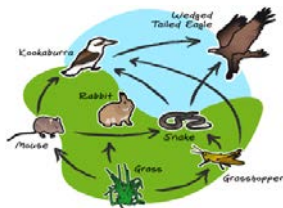
## Erasmus Mundus Master Programme in Evolutionary Biology



## Introducing the MEME programme

The Erasmus Mundus Master Programme in Evolutionary Biology (MEME) is a two-year research oriented master programme for talented and motivated students who are interested in understanding evolution in all its facets. This multidisciplinary programme will address the driving forces of evolution at all levels of organismal organisation (from cells and individuals to populations and ecosystems), and it will allow students to study all kinds of organisms (microorganisms, plants, animals) in a diversity of habitats (marine as well as terrestrial). As an Erasmus Mundus master, MEME is largely funded by the European Union.

The focus of the MEME programme is not only on how evolution shaped life on our planet in the past, but also on how understanding the principles underlying evolution can provide new insights and help to cope with present-day challenges in a variety of fields, including ecology, epidemiology, physiology, immunology, genetics/genomics, bioinformatics, economics and the social sciences. The MEME programme will have a broad focus contentswise, as it aims to educate students with respect to all facets of evolution.



MEME students get a personal mentor, they are offered challenging multidisciplinary courses at the frontline of scientific research, they closely interact with leading researchers and can make use of modern, state-of-the-art techniques and facilities, and they are embedded in a high-quality international network. Accordingly, MEME will provide its students with an optimal preparation for a subsequent PhD study or for other career options in the broad variety of fields where evolutionary thinking is an asset.

## Courses and Research

### Courses

The courses that are offered can be classified in four categories. Courses that focus on:

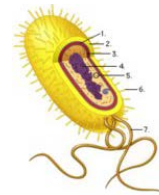
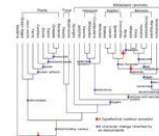
- Fundamental aspects of evolutionary theory, and that will be taught in the first year.
- Specialized topics within evolutionary biology, such as coevolution, adaptation, evo-devo, population genetics, behaviour, ecology and genomics.
- Methods and techniques of modern evolutionary research including experimental design, statistics, evolutionary modelling, phylogenetics, bioinformatics, molecular techniques and QTL analysis.
- Teaching general skills of importance in academia, including presentation techniques, scientific writing, project and time management, teaching skills, research ethics, science and society, career development, intercultural communication and various language courses.

More detailed information on the courses you can find on: [www.evobio.eu](http://www.evobio.eu) .

### Research

During their research projects, students will be conducting their own research under close supervision of an experienced researcher. The student becomes a junior member of the research group and participates in the research meetings, literature clubs, and discussion events.

Students in the MEME programme will spend at least half of their time doing research, carrying out at least two different projects. Students are encouraged to publish the results of their research projects in peer-reviewed journals.



## Key aspect of MEME: Mobility

Mobility is one of the key aspects of the MEME programme. All students will study at at least two partner universities, and more if they choose to do so. Students will start their studies with a semester in either Groningen or Uppsala, and will then move to either Montpellier or Munich for their second semester. In their second year, students can choose at which partner university they want to conduct their individual research projects. A number of students will also be able to do a research project at Harvard University in the USA.

Student mobility is facilitated as much as possible by the consortium of MEME partners. For instance, scholarship holders will be insured at all locations they may travel to.

## Admission and Selection criteria

Because of EU-regulations, we distinguish between two categories of applicants; non-European and European applicants. The following general selection criteria will be applied to determine eligibility of a candidate for the MEME programme, as well as eligibility for scholarships:

- Candidates must have completed a BSc in biology or equivalent, or convincingly show that they will obtain such a degree before the MEME programme starts (before September 2017)
- Candidates must have sufficient background in evolutionary biology or neighbouring disciplines (e.g. ecology or systematics)
- Candidates must have belonged to the top students of their cohort during their BSc
- Candidates must have a strong motivation to pursue a scientific career
- Candidates must be sufficiently proficient in English

To participate in the edition of MEME that will start in September 2017, the application period is from:  
**1 October 2016 till 1 February 2017 (12PM CET)**

Please visit [www.evobio.eu](http://www.evobio.eu) for further details.